

# SCS series

Metal air breathers with interchangeable filter element



## Technical data

### Air breathers & Filter plugs

#### Metal air breathers with interchangeable filter element Flow rate up to 1330 l/min

SCS is a range of air breathers for protection of the tank against the solid contamination contained into the air.

They are composed of a spin-on filter can screwed on a connection tube, directly fitted on the tank. They are directly fitted on the tank.

#### Available features:

- Weld or flanged connection, for a maximum flow rate of 1415 l/min
- Fine cellulose and microfibre filtration, to get a good cleanliness level into the reservoir

#### Common applications:

- Mobile machines (construction and agriculture machines)
- Industrial equipment

### Flow rate $\Delta p$ 0.02 bar

	Flow rate [l/min]			
	Filtration rating	P10	A03	A10
<b>SCS050</b>	550	515	530	
<b>SCS070</b>	550	515	530	
<b>SCS100</b>	1415	1300	1330	
<b>SCS150</b>	1415	1300	1330	

### Materials

Riser: Galvanized steel

### Temperature

From -25 °C to +100 °C

### Weight

SCS050...G1	0.200 kg
SCS050...G2	0.265 kg
SCS100...G1	0.450 kg
SCS100...G2	0.645 kg

CS/CG050	0.73 kg
CS/CG070	0.95 kg
CS100	1.3 kg
CS150	1.6 kg
CG100	1.3 kg
CG150	1.6 kg



## Designation & Ordering code

### COMPLETE AIR FILTER

Series and size				Configuration example 1: SCS050 C G2 V P01						
<b>SCS050</b>	<b>SCS070</b>	<b>SCS100</b>	<b>SCS150</b>	Configuration example 2: SCS150 C G2 A10 V P01						
Connections										
<b>C</b>	Weld riser									
<b>F</b>	Screwed flange									
Threaded connection		SCS050 - 070		SCS100 - 150						
<b>G1</b>	ISO 228	G 3/4"	G 1 1/4"							
<b>G2</b>	U.S. standard	1" - 12 UNF	1 1/2" - 16 UN							
Filtration rating		Size:	050	070	100	150				
Without filter element			•	-	•	-				
<b>A03</b>	Inorganic microfiber	3 µm	•	•	•	•				
<b>A10</b>	Inorganic microfiber	10 µm	•	•	•	•				
<b>P10</b>	Resin impregnated paper	10 µm	•	•	•	•				
Seals								Execution		
<b>A</b>	NBR							<b>P01</b>	MP Filtri standard	
<b>V</b>	FPM							<b>Pxx</b>	Customized	

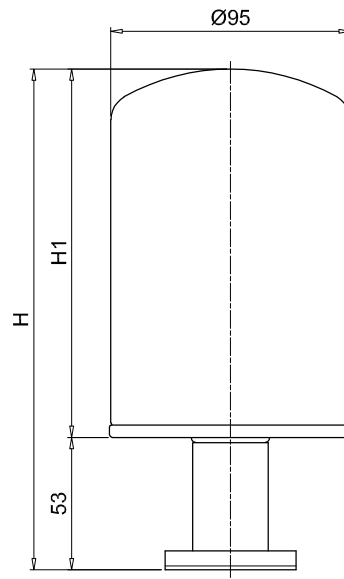
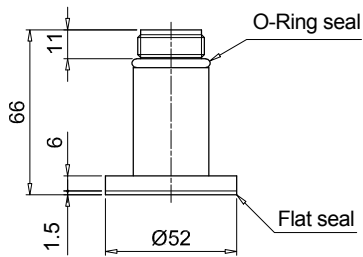
### FILTER ELEMENT

Filter element series		Threaded connection:		Configuration example: CG 150 A10 V P01					
<b>CS</b>	Connection ISO 228	G1	G2						
<b>CG</b>	Connection U.S. standard								
Filter element size									
<b>050</b>	<b>070</b>	<b>100</b>	<b>150</b>						
Filtration rating									
<b>A03</b>	Inorganic microfiber	3 µm							
<b>A10</b>	Inorganic microfiber	10 µm							
<b>P10</b>	Resin impregnated paper	10 µm							
Seals								Execution	
<b>A</b>	NBR							<b>P01</b>	MP Filtri standard
<b>V</b>	FPM							<b>Pxx</b>	Customized

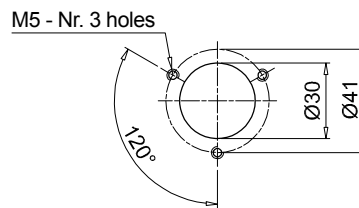
### SCS050-070

#### Screwed flange

Size	H [mm]	H1 [mm]
<b>050</b>	199	146
<b>070</b>	263	210



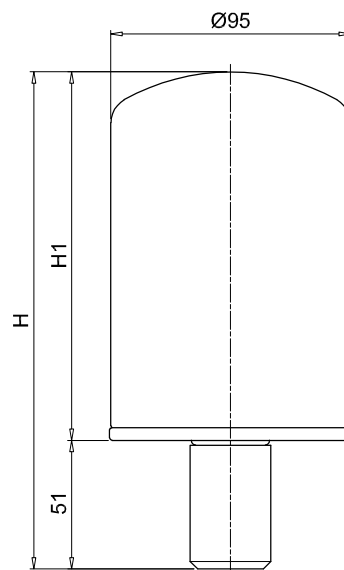
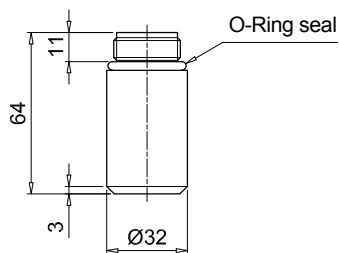
Holes on the tank



### SCS050-070

#### Weld riser

Size	H [mm]	H1 [mm]
<b>050</b>	197	146
<b>070</b>	261	210



## Dimensions

